
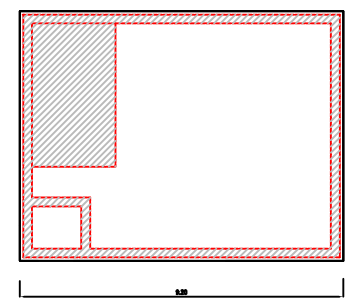
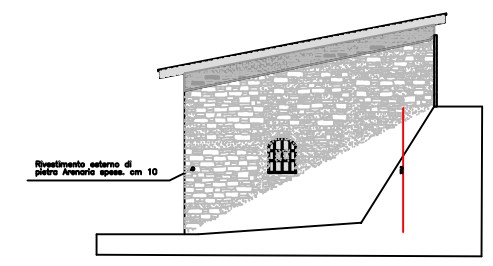
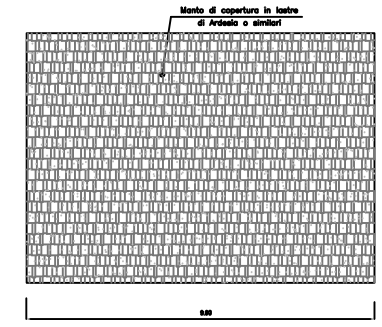


<p>COMUNE DI VERGHERETO PROVINCIA DI FORLÌ - CESENA</p>				
<p>PROPRIETA' : COMUNE DI VERGHERETO</p>				
<p>UBICAZIONE : LOCALITA' PASTORALE PARA 1</p>				
<p>PROGETTO : COSTRUZIONE DI IMPIANTO IDROELETTRICO SUL TORRENTE PARA IN LOCALITA' PASTORALE VERGHERETO 1</p>				
FILE: Mirosl Vergh_plan	PRELIMINARE	DEFINITIVO	ESECUTIVO	TAVOLA: 2
SCALA: 1:2000 - 1:50	planimetria dettaglio centralina scala 1:50			
DATA: Ottobre 2005				
<p>PROGETTISTA ING. MAURO MASSARI</p>				
REV.	REDAZIONE	AUTORIZZAZIONE	MOTIVO - NOTE	

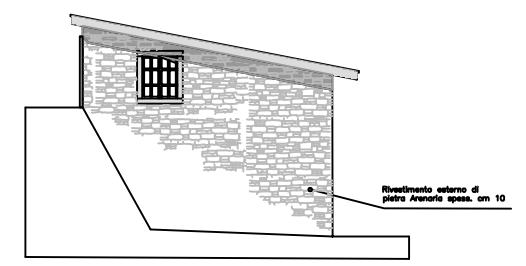
Pianta ristrutturazione
VECCHIO MULINO RICOSTRUITO



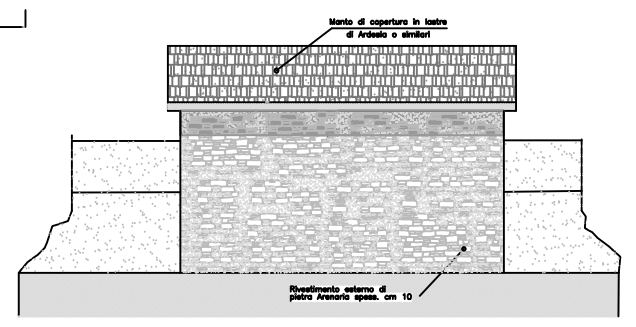
Pianta Copertura



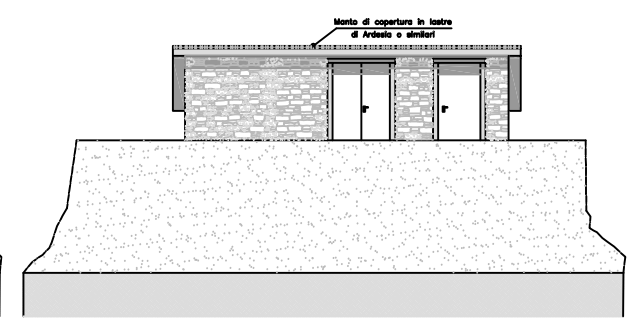
Fianco destro
 Scala 1:50



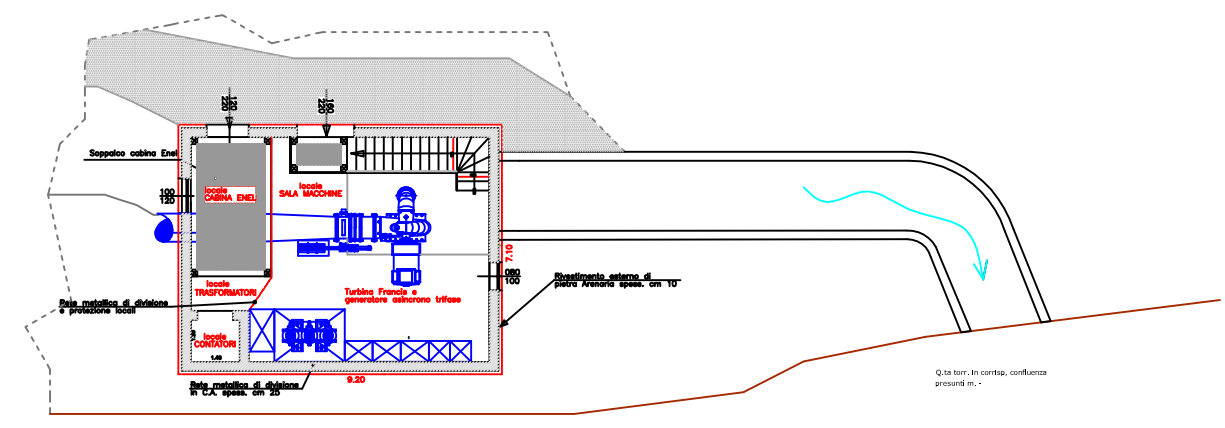
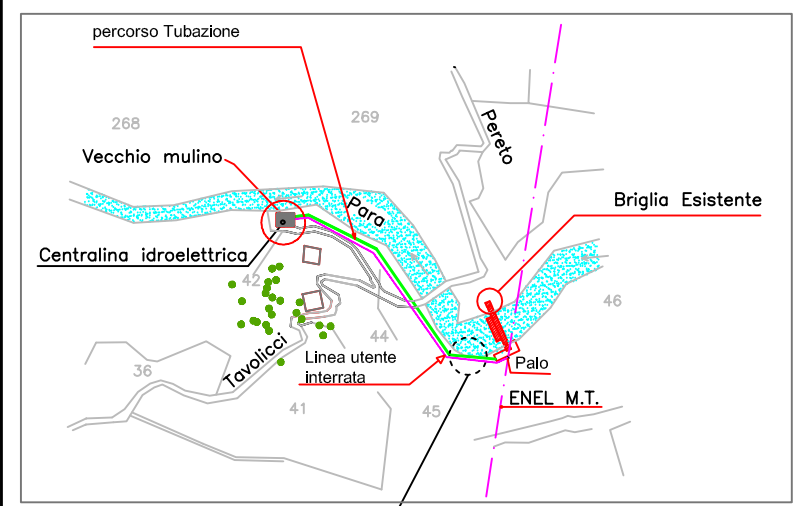
Fianco Sinistro
 scala 1:50



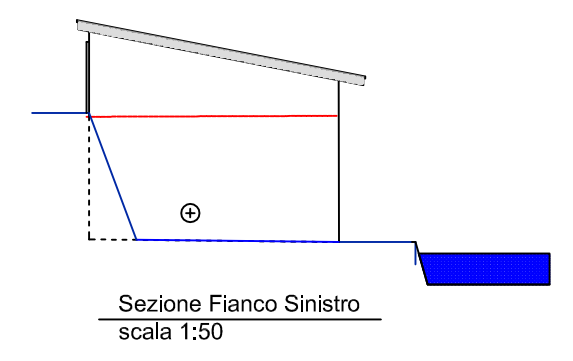
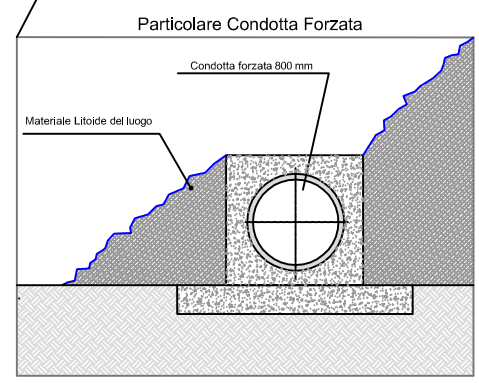
Prospetto anteriore
 Scala 1:50



Prospetto posteriore
 Scala 1:50



Pianta (sala macchine)
 Scala 1:50



Sezione Fianco Sinistro
 scala 1:50